

SNAPE GARDENING CLUB - NEWS



ISSUE NO 36 | JUNE 2025 |

Already we're in June, with the longest day on the horizon! May certainly sent us out with a blustery few days and finally some rain showers! It really was a good reminder to get those plants staked if you've not already done so and to go out on pest patrol! Flaming June sees us off on our first club trip of the year to "Breezy Knees" and this edition gives you the gentle reminder of the jobs to do list. There's a couple of pointers from our last talk from Joe Lofthouse and even if your not an edibles grower these tips can be transferred to the perennial garden. There is also part 2 of our Spring photos, & if you're out & about or in your own garden with a marvellous plant or hanging basket, then send in your snaps.....
happy reading everyone x

It's time for the Chelsea Chop & a look at the prized Chelsea plant of 2025.....

"CHELSEA CHOP"

Prune later flowering perennials between 30-50% & see the benefits:-

- Plants aren't tall & leggy
- Need less staking
- Smaller but more flowers

This happens because by removing the top growth, side shoots develop.

(top shoots usually inhibit side growth by a hormonal process known as apical dominance)



Chelsea plant of 2025 is "Philadelphus Petite Perfume Pink"

What a stunner! Small shrub, suitable for containers, fully hardy, growth of 1.5m x 1.5m, full sun to partial shade, a strong scent and a huge attraction for pollinators.

WHAT'S INSIDE THIS MONTHS ISSUE.....

- SPRING SPECTACLE Part 2
- DO YOU KNOW THE ANSWER
- JOBS TO DO

PLUS SO MUCH MORE...



DEARWORZEL@GMAIL.COM

Send us a photo, recommend a place to visit or have a query we'll do our best to help.....

- GIVE IT A TRY -

dearworzel@gmail.com





Do you know the answer?

- What is "Limnanthes Douglasii" commonly known as?
- Which one of the seven wonders of the world is thought to have been commissioned by King Nebuchadnezzar II?
- Which country has acanthus mollis as its national flower?
- Which of the following gardens is not owned by the RHS?.....Rosemoor, Tatton Park, Harlow Carr & Hyde Hall

(answers on the next page)

TIPS FROM JOE LOFTHOUSE.....May club meeting

What a fascinating talk from Joe (head of edibles at Harlow Carr) Here are a couple of tips that are for edibles & perennial spaces.

- When direct sowing ensure the ground temperature is 10' or above or else germination will not happen.
- Recommended feed - DCM.....I know this caused some confusion & if you internet search then there are several options. The DCM feed for retail purchase lasts for 75-100 days and is a mini-granule formulation that is watered in after application.

*It is available online at:-
fargohomeandgarden.co.uk
& is priced at £9.99 for 1 kg*



BUGS....SLUGS & GRUBS.....HERE'S WHAT TO LOOK OUT FOR AND SOME REMEDIES.

SLUGS....



Tips:- most active at dusk.

Watering in the morning means the soil is dryer when they're on the move.

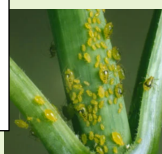
Add in repellent plants- lavender, rosemary, sage, mint & thyme. Use biological control such as nematodes.



Know your slugs, leopard slugs eat dead & decaying plant matter & other slugs!

The key to reducing these problems is having a healthy environment.....one that has a diverse range of visiting predators....well fed and turgid plants...a healthy soil with a good balance of nutrients.

Aphids:- They're prolific, feed on the sap & can stunt the plant growth, cause yellowing & leaf distortion. Remove by hand or soapy water spray.



Lily Beetle:- Munch on the leaves, flowers & seed pods of the lily family.

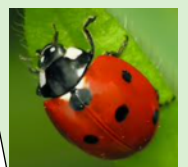


Lily beetles disguise themselves in their faeces!



Wipe off the eggs & pick off the beetles. Spray with sunflower oil or soapy water to deter.

Aphids are part of the food chain so a healthy bio diversity will control them.....a 7 spot ladybird can eat 5000 aphids in its 1 year life cycle!!



We all know that we should 'ne'er cast a clout till May be out' and whether this refers to May the month or May the hawthorn blossom, hopefully we can safely break out our shorts or sundresses very soon! Similarly, in horticultural terms, a Yorkshire gardener's opinion on planting out summer bedding might be 'Anytime before June is far too soon!'. Our summer bedding benches will stay stocked for the next few weeks but the selection on offer from the nursery will dwindle towards the end of the month - so don't leave it too late! Don't forget your 10% discount applies on top of the multibuy deals for bedding packs and hanging basket/container plants.

If you are looking to add something more permanent to your garden we are sure to have something just right for the spot in question. A stately statement piece such as Acer Orange Dream, Ginko Biloba or Cornus Kousa perhaps? Maybe one of those 'every garden needs one' shrubs such as Exochorda, Choisya, Pittosporum or Physocarpus? Or choose from a veritable A to Z of perennials with all sizes, shapes, scents and shades represented. For an Instant splash of summer colour we have Alstroemeria, Pelargoniums and Dianthus.

If it's time to refresh your garden seating options we have some pretty mosaic bistro sets and our very popular 'Hetton' bench is back in stock - this time with a matching bird table too!

The team at Thorp Perrow Garden Centre hopes you all have a bloomin' good June!



JOB'S WITH YOUR EDIBLES.....

Sow beetroot
Sow French beans
Plant tender veg - chillies, courgettes and peppers
Harvest your early crops of radish, lettuce & first early potatoes
Pinch out tomato side shoots
Remove strawberry runners & protect with netting
Plant out sweetcorn, squash & pumpkin
Sow carrots & protect from carrot fly!



JUNE JOBS TO DO:-

JOB'S WITH YOUR PLANTS.....

Deadhead young annuals to encourage side growth & more flowers
Start to liquid feed containers every 2-4 weeks
Stake tall perennials
Lift & divide overcrowded Spring bulbs
Tie in sweet peas
Cut back Spring flowering shrubs to encourage new growth
Sow Spring bedding for next year - daisies, pansies & wallflowers
Add shading to greenhouses
Scoop out leaf debris from ponds after Spring winds
Check hellebores for aphids & remove spent flowers



Spring sauntering.....part 2 of your wonderful photos
.....thank you for sending them in x

